

WOMEN IN CONSTRUCTION & DESIGN



JENNIFER BOLYN
AIA, LEED AP
Principal Architect
EOS Architecture Inc.



Jennifer graduated from Rensselaer Polytechnic Institute with a dual bachelor's degree in Architecture and Building Science. After the university, Jennifer pursued educational and personal development in Rome where she worked and studied for three years. Her focus was on the artistic and cultural values of the Renaissance. Additionally, she spent time in Paris and Berlin learning about the origins of modern art and the Bauhaus School of architecture.

As a builder in a very competitive industry, working with Jennifer and her team is every builder's dream. From beginning to end, her knowledge, detail to perfection and communication allow us to build her vision.

Being a women in a male dominated field, Jennifer's knowledge and extensive education gives her a creative edge that distinguishes her amongst her peers. Jennifer's empowering women in the construction & design industry. She should be recognized as a role model to all.



TIFFANY ENGLISH
Principal
Ware Malcomb

WARE MALCOMB

Joining Ware Malcomb in 2001, Tiffany has overseen, designed and managed over 3 million square feet of projects for commercial real estate and Fortune 500 clients, ranging from tenant improvements to full service build to suit projects, as well as national account management.

A passion for innovative design and committed participation within the industry are just a few characteristics that define Tiffany's work ethic and make her a prominent figure in commercial real estate. She is currently serving as President-Elect on the 2020 CREW Network Board of Directors. Tiffany has helped expand Ware Malcomb's market share, relocated twice for the firm, and opened a second office location in San Diego, yet her influence goes beyond these notable accomplishments. Tiffany believes true success is achieved when you help others succeed, and is an active participant in Ware Malcomb's mentoring program.



ERICA FRANSDEN
Marketing Manager
Balfour Beatty

Balfour Beatty

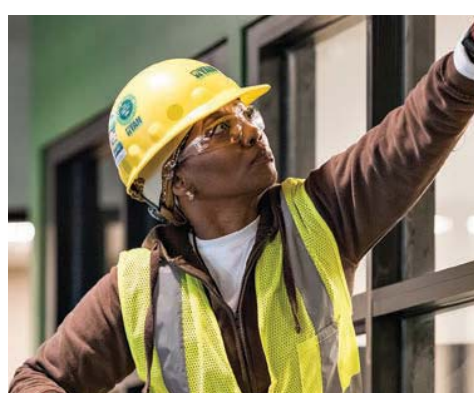
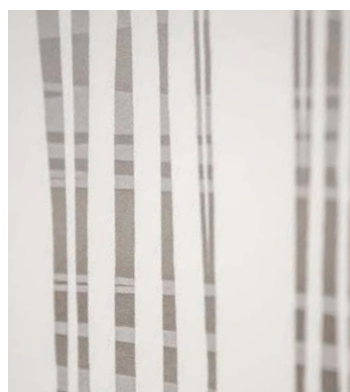
In the construction industry, marketing may not be the first job that comes to mind. Yet the reality is behind a great project there was likely a marketing lead working diligently with a pursuit team on a proposal that successfully communicated this is the right team for the job. Today, our construction teams are currently building over \$350 M worth of work from proposals led by our Marketing Manager Erica Frandsen.

If it's not a proposal, it's philanthropy. Since 2012, Erica has co-chaired organizing USGBC's Green Apple Day of Service for Balfour Beatty employees, a volunteer day held at a designated school. She coordinates several events annually for the Ronald McDonald House, including Red Shoe Day and volunteer days to serve lunches. As an active member in Balfour Beatty's Connecting Women group, she hosts team building events and selflessly volunteers with Habitat for Humanity. She recently served on the board of SMPS, co-chairing new memberships.



Celebrating Women in Construction

RYANCOMPANIES.COM



- DEVELOPMENT
- ARCHITECTURE + ENGINEERING
- CONSTRUCTION
- REAL ESTATE MANAGEMENT
- CAPITAL MARKETS



SANDRA GRAMLEY
Principal & Vice President,
Platt/Whitelaw Architects, Inc.



PLATT/WHITE-LAW
ARCHITECTS, INC.

In addition to serving as the current American Institute of Architects (AIA) San Diego president, Sandra Gramley, AIA, NCARB, LEED AP BD+C, co-leads and co-owns one of San Diego's oldest architecture firms, Platt/Whitelaw Architects (PWA).

The firm became known as an early pioneer in sustainable design, incorporating the discipline in its design projects, helping set standards for the industry and educating students. Sandra, one of the firm's lead project architects, has played an important part in developing and perpetuating PWA's reputation as a sustainable design leader in the 20 years she's been with the firm.

Her leadership success extends outside of her firm, too. For 13 years, she taught interiors and sustainable design at the Design Institute, helping a new generation learn how to design with minimal environmental impacts.

Over the past year and as this year's AIA San Diego president, Sandra is helping create the Center for Design, AIA's effort to create a gathering space, located in downtown San Diego's Civic Center, that celebrates architectural design and designers and engages the general public.



TIFFANY LABRUNO
Director of Professional Services
Gafcon, Inc.



Tiffany LaBruno, Director of Professional Services at Gafcon, Inc., has more than 20 years of facilities and construction technology experience. The construction industry trails last behind all others in the use of technology, but Tiffany leads the charge to stay ahead of the curve in many areas of emerging technologies.

Tiffany ensures these technologies transform the building lifecycle to make construction cheaper and faster, while improving quality through a focus on processes and technologies. They also make projects safer, so our clients can save on insurance premiums by using preventive safety measures.

Last year, Tiffany proposed the use of mobile technologies for the San Diego Regional Airport - Terminal 1 project, from bar code scanners on the helmets of site workers to provide a safe environment if evacuations are required, to filling out safety inspections from the field using iPads.

In 2019, Tiffany was the keynote speaker at the Engineering News-Record's (ENR) FutureTech Conference. In the community, Tiffany serves as Vice Chair of the Arc of San Diego City Chapter Board, one of the largest nonprofits in the county providing services for children and adults with disabilities. She volunteers for the Ride Above Disability Therapeutic Center and for Habitat for Humanity's Build Day.



KATY JOHNSON
Senior Project Manager
Balfour Beatty

Balfour Beatty

Katy Johnson earned her title Senior Project Manager through devotion to enhancing communities, shaping skylines, and inspiring others. It's evident in her legacy that clients, trade partners, and peers benefit from her experience and ambition. During her 15 years with Balfour Beatty, Katy has completed over a dozen notable projects for education and military communities valued in excess of \$200M. Her proudest projects were also her most challenging and inspirational. Take for example the Mesa College Commons - a project designed and built in a collaborative environment that mirrored the delivery standards of an integrated project delivery. Today she takes pride in building beautiful new buildings at El Cajon Valley High School.

Katy wears more than one hard hat. In 2020, she was selected to co-lead the Balfour Beatty Connecting Women employee resource group. Connecting Women is a grassroots movement started by Katy and several women to promote greater empowerment and inclusivity. Within this position, she serves as a mentor and identifies development opportunities for her peers. She participates in Habitat for Humanity Women Build to construct affordable housing and Women Helping Women, which provides resources to unemployed men and women.



SUSIE SLATER
Project Manager
Pacific Building Group



Susie Slater is a project manager at Pacific Building Group (PBG) and a California licensed civil and structural engineer, a rare designation for a construction project manager. As a certified California Safety Assessment Program Evaluator also, this combination allows Susie to lead her team to solve structural problems on client work sites—a huge benefit to both PBG and its clients.

As PBG's lead female project manager, Susie is blazing a trail for women in construction and at her firm. She is a part of the community of women who make up 9.1% of the construction industry in the U.S.

Currently, Susie helps oversee the high-profile, \$22 million, 25,000-square-foot Portside Pier project at the San Diego Embarcadero that poses many unusual challenges, including the PBG team scheduling work between tides and working off barges and boats. Portside Pier consists of a two-story, curved barrel roofed, steel-framed building on top of a new concrete pier and piles over the San Diego Bay.

Susie also works closely with elephant care specialists at the San Diego Zoo Safari Park as she oversees the Elephant Shelters project, consisting of three new heated shade structures inside the elephant habitat and two large planters, which must be constructed in an occupied animal habitat. She is also working on pre-construction for additional phases in and around the elephant habitats slated to start later this year.